

Goolmangar Public School Newsletter

*Engaging Minds
Empowering Success*



Jingi Walla to Term 3, September Edition 16/9/21

WHAT'S BEEN HAPPENING AT GPS...

COVID-19 UPDATE

STAY-AT-HOME RESTRICTIONS

Stay-at-home restrictions will be introduced for Lismore local government areas (LGA) from 16 September 2021, 6pm for seven days.

There will be minimal supervision on site at our school for those students who cannot be educated at home, for example if their parent or carer is an essential worker.

All students and families will be supported with learning choices for tomorrow.

If you are working from home, and your child is able to be educated from home, please keep them at home.

We'd also like to remind you to download the [NSW school updates app](#) onto your phone, if you haven't already done so, to receive the latest updates about the operational status of your child's school.

I want to thank all of our families for your support during this time. Please get in touch with your teacher to discuss any additional needs for your child or family to support you to learn from home. Thank you for your support.

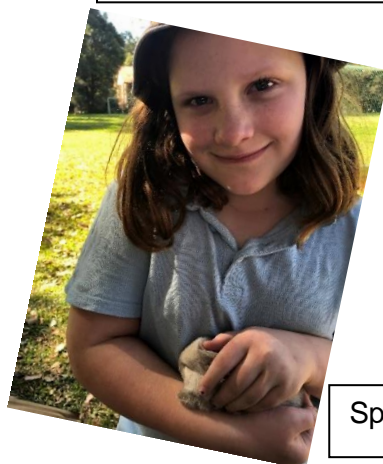
OVERVIEW OF TERM 3



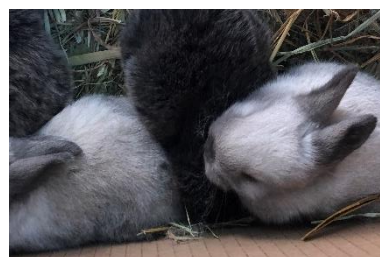
Pet Interview Program has started! Maria & Bella.



Athletics Champions



Special guest visitors- bunnies!





Cooking and making beeswax wraps



Celebrating Science Week



Making our Lego town and riding bikes!

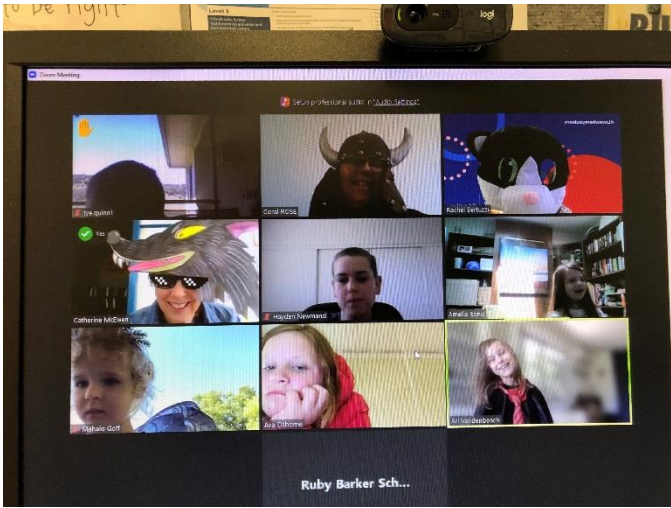
Getting creative!



Learning how to reduce our waste



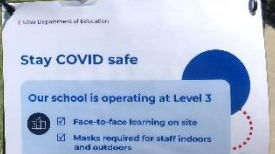
One of our chickens caught reading up on 'Being well'



Daily Zoom Meetings-
Book Week Dress Up Day



Learning Packs weeks 5-9



GOTCHA GURUS for were:

Week 10 Ava

Term 3 Hayden



UPCOMING EVENTS

MINECRAFT CLUB

Students are invited to join our Minecraft Club from 8:30 to 8:55am Monday and Wednesday. This is to cater for students who have requested more time to use this program.



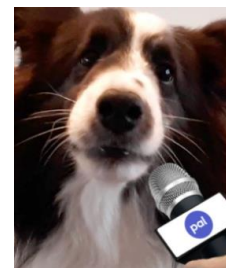
“GUMNUT GANG” KINDERGARTEN ORIENTATION PROGRAM

The “Gumnut Gang” Kindergarten Orientation Program will begin as soon as we have moved down to level two (see attached table), possibly sooner if restrictions ease. We are taking enrolment details now. Please pick up an enrolment form or complete your enrolment online.



PET INTERVIEW FILMING PROJECT

This term our students started the pet interview program. Unfortunately, level three COVID-19 restrictions have stopped us from continuing this program at the moment but we have thought of an alternative. We would like to continue this program by inviting students to make a five-minute film reporting on their pet. Each student will be able to share their film on the ‘big screen’ at school. If you need a device to create a film please let us know.



If you have a pet at home and would like to participate in this project please have your film ready for week one. We will watch one or two pet interviews each week throughout term four. Time to get creative, all your budding film directors!!!

BREAKFAST CLUB

Next term ‘Breakfast Club’ will start from 8:30am to 8:50am Monday to Friday. Students will be able to have some juice, cereal and toast that they prepare themselves and clean up afterwards under supervision. Donations would be gratefully appreciated.

PIE DAY FRIDAY TRIAL

With consultation with the students we are looking at having a pie day on second Fridays starting week 3 in term 4. More information on this next Friday.

SCHOOL PHOTOS

School photos are scheduled for 9am 21 October 2021, depending on what level our school is operating on.




OTHER NOTIFICATIONS

BUSHFIRE SEASON

Our school is in a bushfire prone area and is listed as Category 2 on the NSW Department of Education bushfire risk register. It is important that you are aware of our school's bushfire emergency and response planning. Attached is an outline of our procedures to keep you informed.

What to do in the event of local bush fire activity

Information for parents and carers

	ADVICE ALERT		WATCH AND ACT ALERT	 EMERGENCY WARNING ALERT
<p>A bush fire has started, there is no immediate danger, our school will:</p> <ul style="list-style-type: none"> Update student rolls and account for early leavers/absences in our school system Monitor air quality and adjust school activities accordingly i.e. if smoke affected cease outdoor activities Monitor Fire Danger Ratings, <i>Fires Near Me</i> app, <i>Live Traffic NSW</i> app and local ABC Radio Parents/carers will be kept informed via Skool Loop, Facebook or phone 	<p>There is a heightened level of threat and bush fire conditions are changing, in addition to the Advice Alert procedures:</p> <ul style="list-style-type: none"> If possible, we will alert parents/carers the day before via Skool Loop, Facebook or phone. If the district is affected by heavy smoke, consider keeping students with an Asthma Plan at home. Parents/carers stay updated using the <i>Fires Near Me</i> app, <i>Live Traffic NSW</i> app and/or listen to local ABC Radio School will take action to prepare i.e. provide regular updates of bush fire activity to all occupants and prepare bush fire emergency equipment We will liaise with Northern Rivers Fire Control Centre for support and advice. If required, we will take action to implement our <i>Emergency Management Plan and Bushfire Response</i> 	<p>This is the highest level of bush fire alert.</p> <p>Our school will take action to implement our <i>Emergency Management Plan and Bushfire Response</i></p> <p>We will continue liaising with Northern Rivers Fire Control Centre and keep parents/carers informed of all actions taken by the school</p>		
<h4>EVACUATION PROCEDURES</h4> <p>We will be evaluating the safety of all staff and students, with the Northern Rivers Fire Control Centre, throughout the bush fire event. If the threat is increasing it may be determined that it would be safer for all persons to evacuate. If an EVACUATION is to occur we will:</p> <ul style="list-style-type: none"> Immediately inform parents/carers via Skool Loop, Facebook or phone Safe pick up will be coordinated from the school site, if unsafe to do so from the school site, safe transportation will be organised to relocate all persons to our designated evacuation refuge Information will be provided all parents/carers and arrangements will be made for the safe pick up of all persons from the designated evacuation refuge 		<h4>SHELTERING PROCEDURES</h4> <p>In the event of an approaching bush fire threatening our school we will continue to follow advice from emergency services and SHELTER IN PLACE if appropriate.</p> <ul style="list-style-type: none"> All occupants will be relocated and accounted for at our designated refuge Parents/carers DO NOT COME TO THE SCHOOL we will be safely sheltering in place and keeping all staff and students calm through activities and games. It's important that parents/carers take measures to activate your family Bush Fire Survival Plan We will continue to keep you informed via Skool Loop, Facebook or phone 		

COMMUNICATION on SEESAW, SKOOL LOOP & FACEBOOK

These social media platforms are regularly updated to inform and showcase what our wonderful students are doing. To stay up to date with what is happening please utilise these platforms.

PERSONALISED LEARNING SUPPORT MEETINGS

PLSP meetings will be held when our school enters level one COVID-19 guidelines.

UPGRADES TO OUR SCHOOL

The school grounds will be undergoing some building upgrades in between now and the end of the year. The biggest changes will be covered walkways between the two main buildings. We are also upgrading our library with new carpet, furniture and shelving. This will be a great learning resource centre for our students. The cement under the covered basketball court will be painted to match its surroundings. We are also purchasing new outdoor seating for the front area of the school and play equipment.

EARN AND LEARN RECYCLING OF BOTTLES

The P&C are collecting recyclable bottles to raise funds for school functions. We have a large bin for bottles to be recycled in. Please save your bottles for our school. Thank you.

Visit us on Facebook to see what our students are doing.



Please make sure you have access to the Skool loop App for any updates especially towards the end of the holidays.



Stay safe and enjoy the break.

Boogulbeh, Mrs Bertuzzi

Phone: 6689 9262 **Fax:** 6689 9334

Email: goolmangar-p.school@det.nsw.edu.au

Website: www.goolmangar-p.schools.nsw.edu.au

School resumes in term 4, for staff and students on Tuesday 5 October.



GOOLMANGAR PUBLIC SCHOOL - Coming Events

Dates & Times May Change

School library borrowing every Friday

Term 4	Monday	Tuesday	Wednesday	Thursday	Friday
Week 1 October	4 Labour Day	5 Students Return	6	7	8
Week 2 October	11	12	13	14	15
Week 3 October	18	19	20	21 School Photos	22
Week 4 October	25	26	27	28	29 Teacher's Day :)
Week 5 November	1	2	3	4	5
Week 6 November	8	9	10	11 4/5/6 Brisbane Trip	12 4/5/6 Brisbane Trip
Week 7 November	15	16	17 P&C meeting	18	19
Week 8 November	22 Swimming lessons begin for two weeks.	23	24	25	26
Week 9 Nov/Dec	29	30	1	2 Swimming lessons finish.	3 Celebration Night at GPS TBC
Week 10 December	6	7	8	9	10 End of year Excursion TBC
Week 11 December	13	14	15	16 Students' last day.	17 Staff Development Day

it's OK to talk about it
 kids**helpline**
 Anytime | Any Reason
 Call | Email | WebChat
kidshelpline.com.au
1800 55 1800
 FREE CALL 24/7
 Kids Helpline is a service of yourtown for 5-25 year olds | Emergency 000

COVID-safe school operations



Overview

Guidance on mask wearing

Level 1

School operating in a COVID-safe way

- Students and staff to not attend school if they have symptoms; negative COVID-19 test required prior to returning to school
- Parents, carers and visitors are allowed on site
- QR code check-in and check-out required for all staff and visitors
- COVID-19 Safety Plans required in line with NSW Health advice (such as large gatherings or events)
- Activities such as singing, chanting, choirs, bands and school performances allowed in line with broader Health settings

- Inter-school sport in line with community sport guidelines
- Community use in line with broader Health settings
- SRE/SEE (externally provided religion and ethics classes) operational
- Community Language Schools operational
- PASC on site
- Additional cleaning measures in place

- Staff and students are supported to wear a mask or face covering should they choose to do so.

Level 2

COVID-safe; restrictions on activities and non-essential visitors

- As per Level 1, and:
- Non-essential visitors not allowed on site (including parents and carers)
- Staff identified as vulnerable supported to work from home
- Activities such as singing, chanting, choirs, bands and school performances allowed in outdoor settings only

- Assemblies must have COVID-safe practices in place and no parents or carers are allowed
- Excursions within local government area (LGA) only, and strongly recommended to be outdoors and within walking distance

- While in indoor settings in schools, masks or face coverings are recommended for all staff, and all students in Year 7 and above.

Level 3

COVID-safe; face-to-face learning allowed on site; further restrictions on activities and non-essential visitors

- As per Level 2, and:
- Mask wearing requirements
- Introduction of staggered breaks and reduced mingling of student cohorts wherever possible
- Activities such as singing, chanting, choirs, bands and school performances not permitted
- School caravans can operate with conditions

- No assemblies
- No excursions
- No community use (except early childhood services and CCSI services)
- No SRE/SEE (externally provided religion and ethics classes)
- No Community Language School on site

- While on school sites, both indoors and outdoors, masks or face coverings are mandatory for all staff, and all students in Year 7 and above.

Level 3 plus

COVID-safe; face-to-face learning allowed for certain cohorts if vaccination rates achieved; restrictions on activities and non-essential visitors

- As per Level 3, with following conditions:
- Return to school will be based on community settings such as adults fully vaccinated and levels of community transmission
- Only vaccinated staff on site
- Students in cohorts (including split classes) starting with staggered return of priority cohorts
- Exams as per Health approved COVID-safe HSC guide

- Minimised interactions and contact within student cohorts
- Staff interactions limited with physical distancing
- Staggered access to school facilities and shared spaces such as libraries and canteens
- Drop-offs, pick-ups and break times staggered by cohort

- While on school sites masks are mandatory indoors and outdoors for all staff and all students Year 7 and above. Masks are strongly recommended for primary students.

Level 4

Learning from home encouraged; schools are open for families who need it

- Families are encouraged to keep their children at home, with no student to be turned away
- Schools activate plans to support continuity of education for all students learning from home

- Where students and staff are at school, Level 3 guidelines apply, and:
- No community use (except early childhood services)
- No canteens

- While on school sites, both indoors and outdoors, masks or face coverings are mandatory for all staff, and all students in Year 7 and above.

Level 4 plus

Minimal students and staff on site; learning from home encouraged; schools are open for families who need it

- Schools operate learning from home, with stricter guidance for students and staff on-site
- Schools are actively encouraged to further minimise students attendance with the support of increased community messaging
- Schools remain open with absolute minimum of staff – 2 staff are required on site for safety reasons, and only as many additional staff as required to maintain supervision and to meet immediate needs of the school. If a school requires more than 5 staff members to attend, they must consult with their Director, Educational Leadership

- Where students and staff are at school, Level 3 guidelines apply, and:
- No community use (except early childhood services)
- No canteens

- While on school sites, both indoors and outdoors, masks or face coverings are mandatory for all staff, and all students in Year 7 and above.